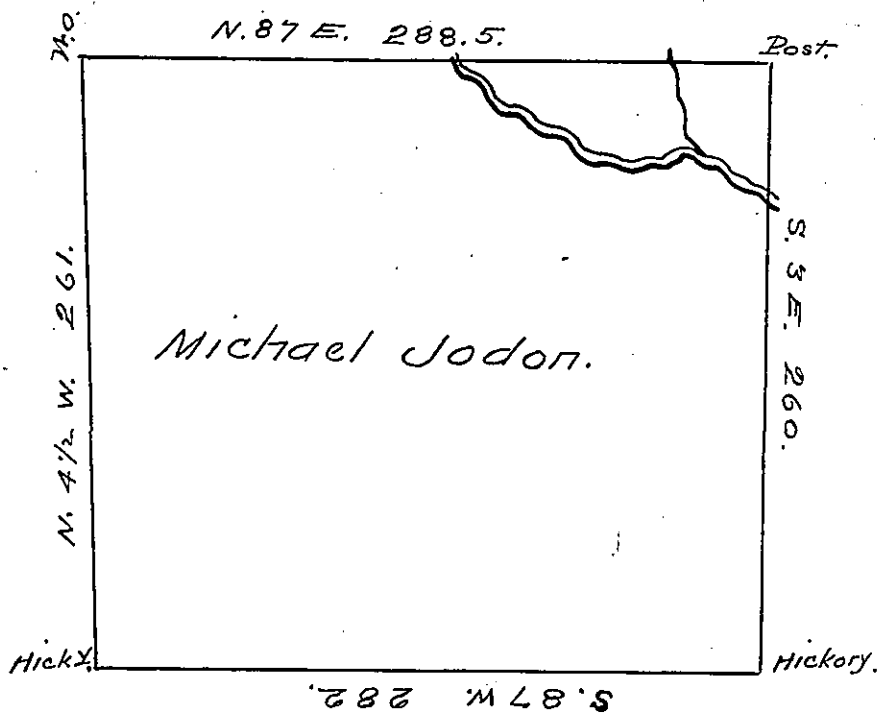


Samuel Church.

Donation land.



Peter Jodon.

Philip Jodon.

Situate on the waters of Beaver Creek in District
 No. 3 Allegany County Containing 438^{ac} 9^{ps} & al-
 lowance Surveyed May 22^d 1795 in pursuance of
 a warrant granted Michael Jodon April 21st 1794

Dan^l. Brodhead Esq. S. G.

Ben. Stokely D.S.

IN TESTIMONY that the above is a copy of the original remaining on file in
 the Department of Internal Affairs of Pennsylvania, made
 conformably to an Act of Assembly approved the 16th day of
 February, 1833, I have hereunto set my Hand and caused
 the Seal of said Department to be affixed at Harrisburg,
 this first day of June 1905.

Joseph P. ...
 Secretary of Internal Affairs.